

Irwin Heads

Oil Chemists

*New President Is Chemist with Swift and Co., Chicago;
Vice-Presidents Represent Varied Interests*



ON MAY 9th, The American Oil Chemists' Society, assembled at its Twenty-first Annual Meeting at the Hotel Roosevelt, New Orleans, Louisiana, unanimously elected William H. Irwin, of Chicago, Illinois, to be President of the Society during the year 1930-1931. Mr. Irwin is Assistant Chief Chemist of Swift and Company, and is one of the best known and most liked members of the Society. He is also an indefatigable worker, and the Society can be assured of a successful year during his tenure of the office of President.

The new President of the Society was born in Iowa, but removed at an early age to Lawrence, Kansas. Upon completing his college training at the University of Kansas, he entered the employ of Swift and Company at their Kansas City, Kansas plant, where he and his brother established the second laboratory in the Swift and Company organization in 1899. After a brief period spent at Chicago, Mr. Irwin became Chief Chemist at the St. Joseph, Missouri laboratory of the company in 1900, in which position he remained until 1912, when he was transferred to Chicago as Assistant to Dr. W. D. Richardson, Chief Chemist. Mr. Irwin has been active in the Chicago Section of the American Chemical Society, having been treasurer of the Section in 1919. He has been an active member of the American Oil Chemists' Society for many years and has contributed freely of his time and efforts in the advancement of the work of the Society. One of his outstanding accomplishments has been the development of the Society's Standard Moisture Oven, which has placed the determination of moisture percentages upon a high plane of accuracy.

The new President's recreational activities include tennis, golf, hunting, fishing and other outdoor sports.

Vice-Presidents

THE new Vice-Presidents of the Society are: First Vice-President, A. S. Richardson; Second Vice-President, M. M. Durkee;



W. H. IRWIN
President A. O. C. S. 1930

Third Vice-President, L. B. Forbes; Fourth Vice-President and Chairman of the Soap Section, Archibald Campbell.

Mr. Richardson is in charge of Research in the Chemical Division of The Procter and Gamble Manufacturing Company at Cincinnati, Ohio. He has been active for some years in the affairs of The American Oil Chemists' Society.

(Turn to page 235)

Census Report (Continued)

EXPORTS OF FOREIGN FATS AND OILS, QUARTER ENDED MARCH 31, 1930

KIND	Pounds	KIND	Pounds
Animal fats & oils, edible	1,480	Palm & palm-kernel oil	245,107
Fish oils	27,654	Peanut oil	3,888
Other animal oils & fats, inedible	4,338	Soya-bean oil	1,829
Olive oil, edible	25,543	Other expressed oils & fats	174,626
Tung oil	1,462,394	Vegetable wax	235,532
Coconut oil	475,574		

EXPORTS OF DOMESTIC FATS AND OILS, QUARTER ENDED MARCH 31, 1930

KIND	Pounds	KIND	Pounds
Oleo oil	14,680,320	Other animal greases & fats	14,143,653
Oleo stock	1,733,372	Cottonseed oil crude	11,251,443
Tallow	785,599	Cottonseed oil, refined	1,322,444
Lard	205,778,026	Corn oil	93,293
Lard neutral	4,611,321	Vegetable oil lard compounds	1,521,611
Lard compounds, containing animal fats	679,018	Other edible vegetable oils and fats	774,411
Oleo & lard stearin	1,336,374	Coconut oil	5,884,655
Neat's-foot oil	260,546	Linseed oil	438,233
Other animal oils, inedible	147,709	Soya-bean oil	1,155,349
Fish oils	70,227	Vegetable soap stock	4,482,522
Grease stearin	444,137	Other expressed oils and fats, inedible	1,239,796
Oleic acid, or red oil	326,006	Glycerin	115,911
Stearic acid	177,757		

Oil Chemists' Officers
(from page 213)



A. S. RICHARDSON



M. M. DURKEE

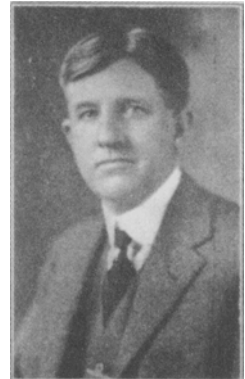
Mr. Durkee is Superintendent of the Oil Division of the A. E. Staley Manufacturing Company of Decatur, Illinois, manufacturers of cornstarch, corn oil and other products from corn and of soya bean oil, cake and meal. Mr. Durkee was formerly connected with the Pompeian Company of Baltimore, and with the Houck Food Products Company of Kings-ton, New York.

Mr. Forbes conducts the L. B. Forbes Laboratories of Little Rock, Arkansas, specializing in the analysis of cottonseed oil, meal and other products of the cotton plant.

Mr. Archibald Campbell is well known to all members of the Society, having been active in its councils for many years. After having been Vice-President in charge of manufacturing of the Globe Soap Company of Cincinnati for an extended period, Mr. Campbell sold his interests in that company to the Procter and Gamble Company, and is now engaged in Chemical Engineering Consultation on soap, glycerine and allied products. He is a graduate of the University of Michigan and a Past President of the American Oil Chemists Society. The selection of Mr. Campbell as Vice-President and Chairman of the Soap Section assures that Section of the Society of continued progress during the coming year.



L. B. FORBES



ARCHIBALD CAMPBELL

Prices

Candles, adamantine 6s 16 oz.					
20-set cases	set.	.14½	.15¾		
40-set cases	set.	.14	.14½		
Candles, paraffin, cs., 14 oz., case of					
40 sets	set.	.10	.10¾		
6s 14 oz., case of six cartons containing					
36 sets	set.	.11	.11¾		
6s 12 oz., 40 set cases	set.	.09	.09¾		
6s 12 oz. cases of six cartons containing					
36 sets	set.	.10	.10¾		
Patent ends	set.	.17¾	.18		
Stearin 6s 16 oz., plain, cases	set.	.16¾	.17		
Castor, No. 1, bbls.	fb.	.12½	.12½		
No. 3, bbls.	fb.	.11¾	.12		
Chinawood, bbls. or drs.	fb.	.09¾	.10		
Coast, tanks, spot	fb.	.08¾	.08¾		
Futures	fb.	.08¾	—		
Coconut, Ceylon grade, bbls.	fb.	.07¾	.08		
Coast, Tanks, Domestic White	fb.	.06¾	.06¾		
Cochin grade, bbls.	fb.	.08	.08¾		
Manila, bbls.	fb.	.07¾	.08		
Tanks, N. Y.	fb.	.06¾	.06¾		
Fatty acids, mill tanks	fb.	.10	nom.		
Cod, Newfoundland, bbls.	gal.	.60	.62		
Copra, bags, coast	fb.	—	.04		
Corn, tanks, mills	fb.	.07¼	.07¾		
Bbls., New York	fb.	.10	nom.		
Refined, bbls.	fb.	.11	.11¼		
Fatty acids	fb.	.07¾	nom.		
Cottonseed, crude, tanks, mills	fb.	.07¼	—		
P. S. Y.	fb.	.08¾	—		
Fatty acids, mill, bbls.	fb.	.08¾	nom.		
Degras, domestic, bbls.	fb.	.03¾	.04½		
English, bbls.	fb.	.04¼	.05		
German, bbls.	fb.	.03¼	.03¾		
Neutral, domestic, bbls.	fb.	.07¾	.08½		
English, bbls.	fb.	.08	.09		
German, bbls.	fb.	.07	.07½		
Greases, choice white, bbl. N. Y.	fb.	.05¼	.07½		
Yellow	fb.	.05¾	.05½		
Brown	fb.	.05¼	.05¾		
House	fb.	.05¾	.05½		
Herring, coast tanks	gal.	—	nom.		
Horse, bbls.	fb.	.09½	nom.		
Lard, city, tierces	fb.	.10¼	—		
Compound, tierces	fb.	.10¾	.11		
Middle Western, tierces	fb.	.10¾	—		
Neutral, tierces	fb.	.12	nom.		
Prime Western, tierces	fb.	.10¾	—		
Lard oil, No. 1, bbls.	fb.	.09¾	—		
No. 2, bbls.	fb.	.09½	—		
Extra bbls.	fb.	.10¼	—		
No. 1, bbls.	fb.	.10	—		
Winter strained, bbls.	fb.	.10¾	—		
Prime, bbls.	fb.	.12½	—		
Linseed Oil, boiled, tanks	fb.	.1360	—		
Car lots, bbls.	fb.	.1440	—		
Less car lots, bbls.	fb.	.1480	—		
Less than 5 bbls.	fb.	—	.1520		
Double boiled, less than 5 bbls.	fb.	.1550	.1580		
Raw, tanks	fb.	.1220	—		
Car lots, bbls.	fb.	.1440	—		
Less car lots, bbls.	fb.	.1440	—		
Less than 5 bbls.	fb.	.1480	—		
Refined, bbls.	fb.	.1470	.1510		
Varnish grades, bbls.	fb.	.1490	.1530		
Linseed cake, bags	ton	35.00	36.00		
Meal, bags	ton	44.00	45.00		
Menhaden, crude, tanks, Baltimore	gal.	.45	nom.		
Light pressed, bbls.	gal.	.58	.60		
Yellow bleached, bbls.	gal.	.60	.62		
White bleached, bbls.	gal.	.63	.65		
Mustard, bbls.	gal.	.90	—		
Neatsfoot, cold pressed, bbls.	fb.	.17	—		
Extra, bbls.	fb.	.10¼	—		
No. 1, bbls.	fb.	.10¼	—		
Pure, bbls.	fb.	.12¾	—		
Oleo, No. 1, bbls.	fb.	.11½	—		
No. 2, bbls.	fb.	.10¾	—		
Olive, denatured, bbls. N. Y.	gal.	.75	.85		
Shipments	gal.	.75	.80		
Foots, bbls.	fb.	.06¾	.07		
Shipments	fb.	.06¾	—		
Edible, bbls.	fb.	2.00	2.20		
Palm, Lagos, casks, spot	fb.	.06¾	—		
Shipments	fb.	.06¾	—		
Niger, casks, spot	fb.	.06½	—		
Shipments	fb.	.06	—		
Palm Kernel, pkgs.	fb.	.07½	.07¾		
Tank cars	fb.	.07	.07¼		
Peanut, crude, bbls.	fb.	.09¼	.09¾		
Mills, tanks	fb.	.07¾	.08		
Refined, bbls.	fb.	.11¾	nom.		
Perilla, bbl.	fb.	.12½	.13		
Poppy Seed, bbls.	gal.	1.70	—		
Rapeseed, blown, bbls.	gal.	.92	.93		
Refined, bbls.	fb.	.67	.70		
Red Oil, distilled, bbls.	fb.	.10½	.10¾		
Tanks	fb.	.09¼	—		
Saponified, bbls.	fb.	.10¾	.10¾		
Tanks	fb.	.09¼	—		
Salmon, coast, tanks	gal.	.35	nom.		
Sardine, coast, tanks	gal.	.35	nom.		
Sesame, refined, drums	fb.	.12	.12½		
Soya Bean, blown, bbls.	fb.	.13	.13¼		
Crude, bbls.	fb.	.11	.11¼		
Orient, coast, bbls.	fb.	.09½	.09¾		
Sperm, bleached f.o.b., New Bedford,					
bbls.	gal.	.84	.85		
Natural, f.o.b., New Bedford, bbls.	gal.	.78	.80		
Stearic Acid, Double pressed, bags	fb.	.14½	.15		
Triple pressed, bags	fb.	.16½	.17		
Stearine oleo, bbls.	fb.	.08¾	.08¾		
Tallow, edible, bbls.	fb.	.06¾	.07¾		
City, extra, works, loose	fb.	.06	—		
Special, works, loose	fb.	.05¾	—		
Tallow, oil, acidless, bbls.	fb.	.09¾	—		
Tanks, N. Y.	fb.	.09½	—		
Vegetable tallow, coast, mats	fb.	.06¾	—		
Whale, crude, No. 1, coast, tanks	lb.	.07	—		
No. 2, coast, tanks	fb.	.06½	—		
Refined, winter bleached, bbls.	gal.	.80	—		
Extra, bbls.	gal.	.82	—		
Natural, bbls.	gal.	.78	—		